



Anhui Liyuan Wire Drawing Dies Co.,Ltd

Tel:+86-0550-7020738

Fax:+86-0550-7020838

E-mail:ahlylsm@163.com

Address:Zhongdi International City,Tianchang City,Anhui Province

Production Base:Zhongdi International City,TianchangCity Anhui Province



Anhui Liyuan Wire Drawing Dies Co.,Ltd

Professional for
designing&making diamond dies

Into the Future



COMPANY INTRODUCTION

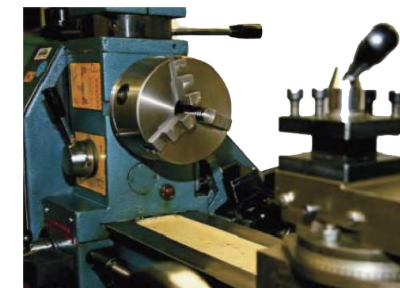
Anhui Liyuan Wire Drawing Dies Co.,Ltd specializes in manufacturing Synthetic Polycrystalline Diamond Die, Natural Diamond Die, Imported polycrystalline Die, Tin-plated Die, Film-coating Die, Extrusion Die and Special-shaped Die. Besides, we also have the following derivatives: electric wire and cable, electrical alloy, electromagnetic wire, steel cord, King Kong wire, bonding wire, tungsten wire, molybdenum wire, stainless steel wire and so on.

Our company has successively introduced the advanced production and inspection equipment from Norway "CONOPTLCA" and German "SCOB" company. Therefore, with such large technical capacity, sophisticated production equipment, perfect craftsmanship, rigorous quality control and modern management approaches, we can offer extremely high quality products to our customers. And our product quality is at the leading level at home and abroad.

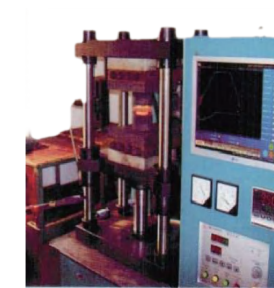
Our company has accumulated rich production experience in long-term production practice, and our production is strictly in accordance with ISO9002 international quality standard. We have advanced production equipment, strong technical force and stable product quality. In the fierce market competition, we will continue to increase investments in science and technology to improve product quality and the service system. Our business philosophy is to dedicate first-class products and services to our customers, Sincerely thank the old and new users for your love for Liyuan, and we hope to cooperate with you sincerely.

Work in process

- 1、 Our company has a full set of production equipment and testing machines, can pull specifications of 0.01mm – 6.0mm of a variety of metal materials
- 2、 Develop new metal materials and new drawing process according to different requirements of customers
- 3、 Improve production efficiency and reduce cost



Die blank precision machining



Program controlled hot press sintering machine

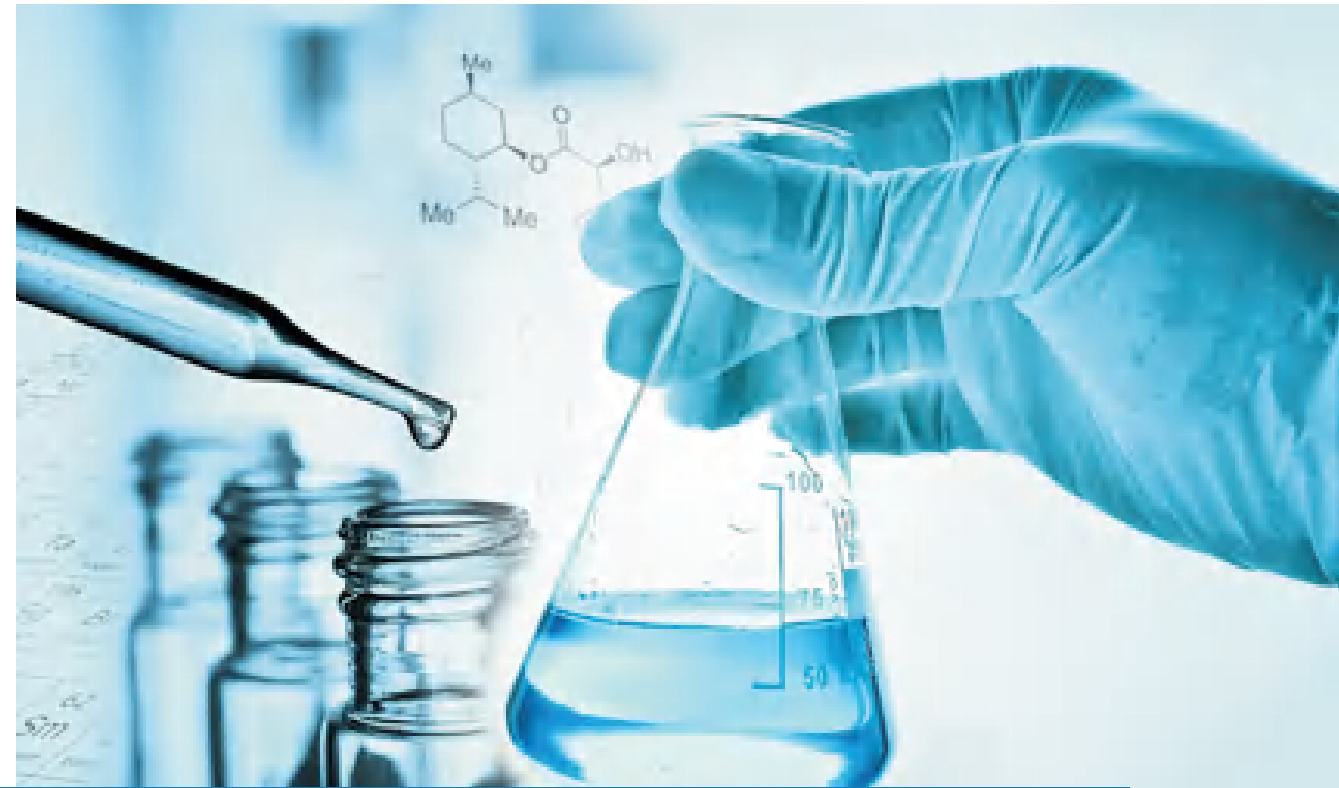


Laser precision drilling

Finished operation

We have rich experience in mold production and quality control system, and have been widely used in copper wire alloy copper wire aluminum clad copper, bonded gold wire single crystal copper copper carbon wire and various coating wires





1

Quality Certificate

Quality Control



1 Quality Certificate

2 QC Equipment

2

QC Equipment

Quality always comes first, we have established strict quality control system, and cooperated with colleges and universities to inspect raw material, semifinished and finished dies by using advanced detection equipment.

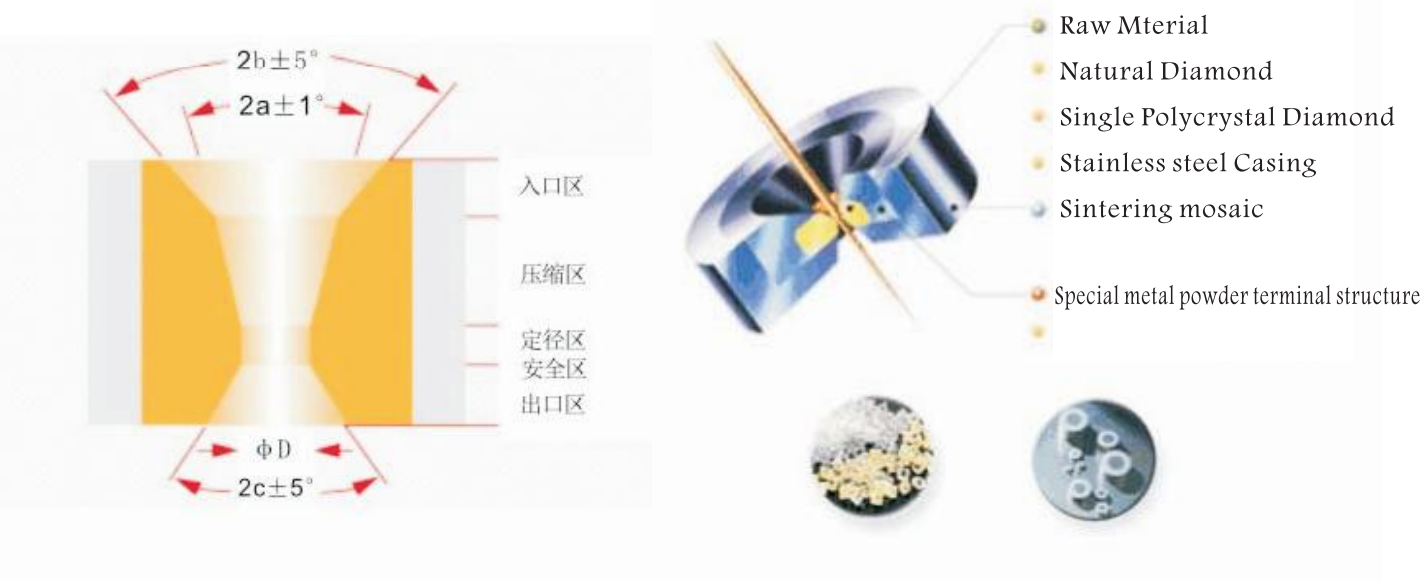


Raw Material



Hole Design

Material	Soft wire			Hard wire		
Name	Gold, silver	Aluminum, lead	Copper	Copper clad steel	Stainless steel	High carbon steel
Entrance	80°	80°	80°	80°	80°	80°
Lubrication	35°	35°	35°	35°	35°	35°
Reduction cone	20±2°	18±2°	16±2°	14±2°	12±2°	10±2°
Bearing	0.1-0.3D	0.2-0.4D	0.3-0.5D	0.4-0.6D	0.4-0.7D	0.5-0.8D
Back relief	25±5°	25±5°	25±5°	25±5°	25±5°	25±5°
Exit	60°	60°	60°	60°	60°	60°



Product Contents

- Polycrystal Diamond Dies
- Single crystal Dies
- Nano Coating Dies
- Natural Diamond Dies
- Shaped drawing dies



Die aperture diameter and select material					
Size(mm)	ND	SD	PCD	TC	Nano coating
0.0200-0.0299	☑				
0.0300-0.0499	☑	☑			
0.0500-0.0799	☑	☑			
0.0800-0.1999	☑	☑	☑		
0.2000-0.4999	☑	☑	☑	☑	☑
0.5000-1.1999		☑	☑	☑	☑
1.2000-12.000			☑	☑	☑
Main applicable materials	Gold,Silver,Tin,Copper,Aluminum.Copper clad aluminum wire,Tin plated copper wire,Silver plated copper wire		Copper,Aluminum,Tungsten,Molybdenum,Cutting wire,Steel wire,stainless steel wire, Alloy wire		



Single crystal Dies



CD cobalt based polycrystalline diamond drawing dies adopt advanced process of high temperature and ultra high pressure and refined. High bonding between diamond particles makes CD dies have superior quality and good wear resistance. Besides, our dies have accurate bore diameter, high finish and precise size, all these are benefit to deform wire uniformly, minimize the pull and acquire the best surface quality. It is the best choice for wire drawing of metal wire such as electromagnetic wire, stainless steel wire, platinum wire, copper wire and alloy wire.

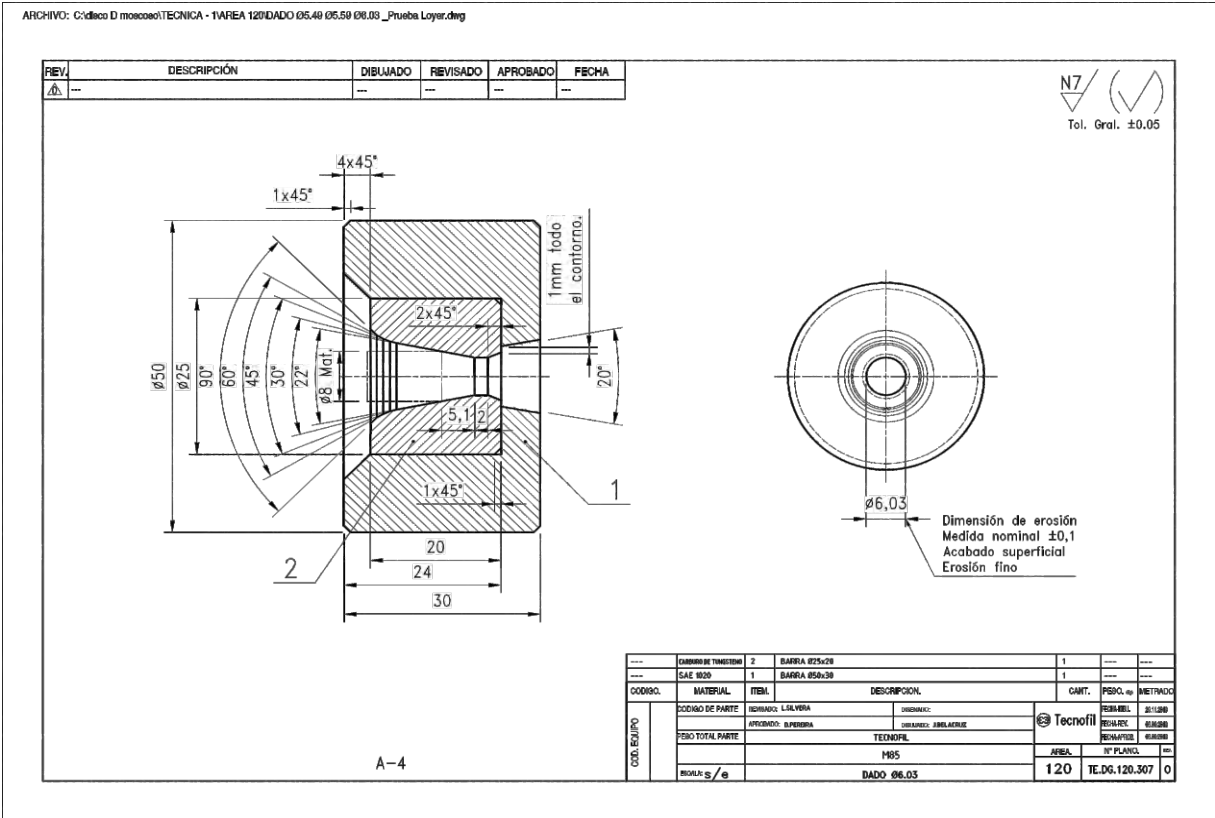


Single crystal Dies



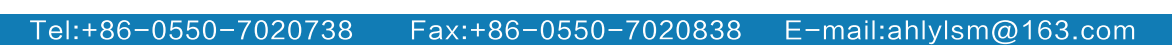
Material selection reference table:

Die aperture diameter and select material					
Size(mm)	ND	SD	PCD	TC	Nano coating
0.0200-0.0299	<input checked="" type="checkbox"/>				
0.0300-0.0499	<input checked="" type="checkbox"/>	<input checked="" type="checkbox"/>			
0.0500-0.0799	<input checked="" type="checkbox"/>	<input checked="" type="checkbox"/>			
0.0800-0.1999	<input checked="" type="checkbox"/>	<input checked="" type="checkbox"/>	<input checked="" type="checkbox"/>		
0.2000-0.4999	<input checked="" type="checkbox"/>	<input checked="" type="checkbox"/>	<input checked="" type="checkbox"/>	<input checked="" type="checkbox"/>	<input checked="" type="checkbox"/>
0.5000-1.1999		<input checked="" type="checkbox"/>	<input checked="" type="checkbox"/>	<input checked="" type="checkbox"/>	<input checked="" type="checkbox"/>
1.2000-12.000			<input checked="" type="checkbox"/>	<input checked="" type="checkbox"/>	<input checked="" type="checkbox"/>
Main applicable materials	Gold,Silver,Tin,Copper,Aluminum.Copper clad aluminum wire,Tin plated copper wire,Silver plated copper wire		Copper,Aluminum,Tungsten,Molybdenum,Cutting wire,Steel wire,stainless steel wire, Alloy wire		





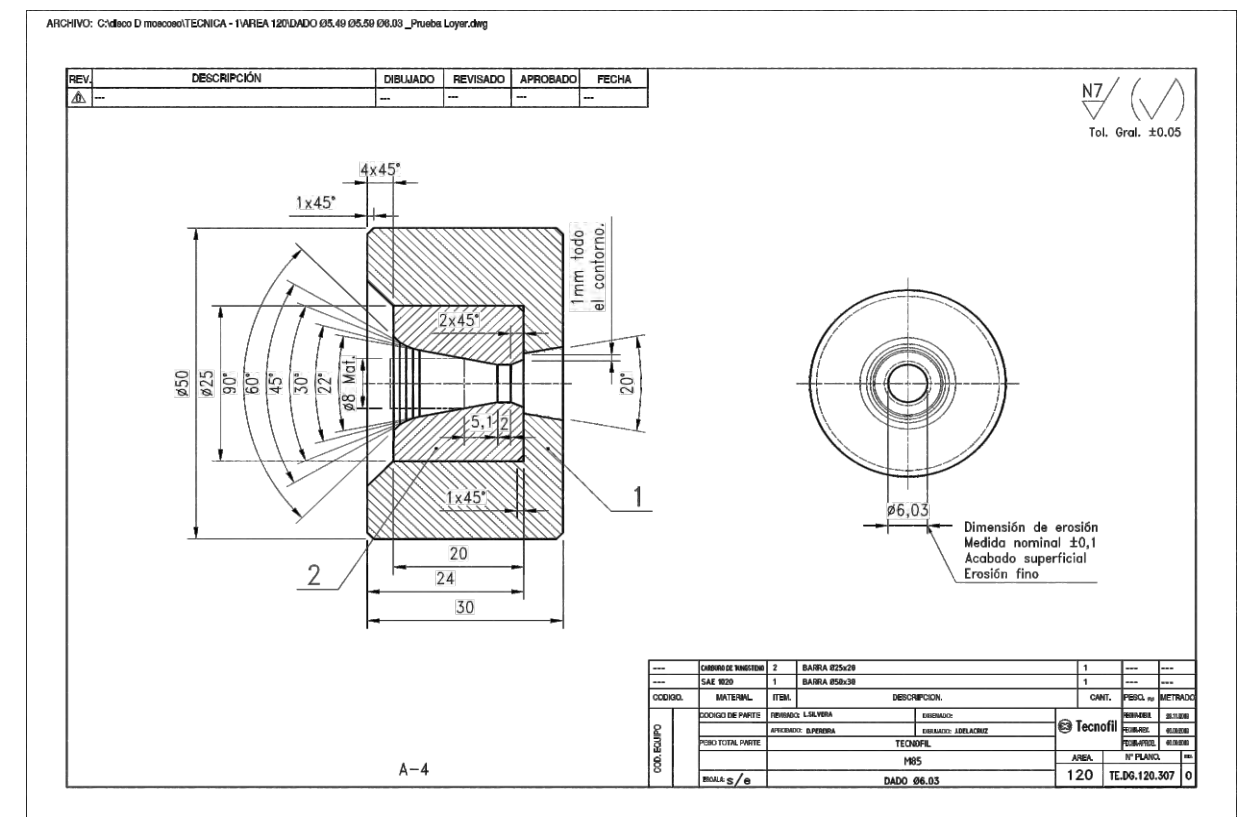
Die aperture diameter and select material					
Size(mm)	ND	SD	PCD	TC	Nano coating
0.0200-0.0299	☑				
0.0300-0.0499	☑	☑			
0.0500-0.0799	☑	☑			
0.0800-0.1999	☑	☑	☑		
0.2000-0.4999	☑	☑	☑	☑	☑
0.5000-1.1999		☑	☑	☑	☑
1.2000-12.000			☑	☑	☑
Main applicable materials	Gold,Silver,Tin,Copper,Aluminum.Copper clad aluminum wire,Tin plated copper wire,Silver plated copper wire		Copper,Aluminum,Tungsten,Molybdenum,Cutting wire,Steel wire,stainless steel wire, Alloy wire		



Natural Diamond Dies



Die aperture diameter and select material					
Size(mm)	ND	SD	PCD	TC	Nano coating
0.0200-0.0299	☑				
0.0300-0.0499	☑	☑			
0.0500-0.0799	☑	☑			
0.0800-0.1999	☑	☑	☑		
0.2000-0.4999	☑	☑	☑	☑	☑
0.5000-1.1999		☑	☑	☑	☑
1.2000-12.000			☑	☑	☑
Main applicable materials	Gold,Silver,Tin,Copper,Aluminum.Copper clad aluminum wire,Tin plated copper wire,Silver plated copper wire		Copper,Aluminum,Tungsten,Molybdenum,Cutting wire,Steel wire,stainless steel wire, Alloy wire		



Tel:+86-0550-7020738 Fax:+86-0550-7020838 E-mail:ahlysm@163.com

Shaped drawing dies



The special shaped dies we produce include rectangular, oval, semicircle, triangle, hexagon and so on. We also can produce other shapes according to customers' demand and need. Besides, we have professional engineers who can provide customers with a whole set design of dies to meet customers' needs of special shaped wire.



Shaped drawing dies



Material selection reference table:

Die aperture diameter and select material					
Size(mm)	ND	SD	PCD	TC	Nano coating
0.0200-0.0299	☑				
0.0300-0.0499	☑	☑			
0.0500-0.0799	☑	☑			
0.0800-0.1999	☑	☑	☑		
0.2000-0.4999	☑	☑	☑	☑	☑
0.5000-1.1999		☑	☑	☑	☑
1.2000-12.000			☑	☑	☑
Main applicable materials	Gold, Silver, Tin, Copper, Aluminum. Copper clad aluminum wire, Tin plated copper wire, Silver plated copper wire		Copper, Aluminum, Tungsten, Molybdenum, Cutting wire, Steel wire, stainless steel wire, Alloy wire		

